



ENGINE

Model	PERKINS 1104C-44T
Type	Water cooled diesel engine with 4 cycles, 4 cylinders, water cooled, turbocharger and inter-cooler.
Emission class	Stage II (Tier 2)
Cylinders	4
Displacement	4.400 cc
Max. Power	74.5 kW / 99 HP (@2200 rpm)
Max. Torque	408 Nm (@1400 rpm)
	▪ Compatible with the Emission Regulations EU Stage II and U.S EPA Tier2

TRANSMISSION

- Heavy-Duty Auto Powershift Transmission (TLB2 CD)
- 4 Forward and 4 Reverse Gears
- 40 km/h max. Speed
- Fully Hydraulic Steering
- 2 WD / 4WD Switch
- 40 km/h max. speed
- 2.64/1 Stall Ratio converter
- Transmission lubricant cooling

AXLES

- Heavy-Duty Service Type CARRARO Axles
- 16° Front Axle Oscillation
- 2WD and 4 WD Function
- Outboard Planetary Reduction
- LSD (Limited Slip Differential) on Rear Axle

HYDRAULIC SYSTEM

▪ Main Pump	
Type	Tandem Gear Type
Max. flow rate	86 l/min
Pressure	240 bar
▪ Auxiliary Pump	
Type	Gear type
Max. flow rate	59 l/min
Pressure	207 bar
	▪ Highly efficient tandem gear pump, open-center hydraulic system.

WEIGHT

- Standard machine operating weight** 9.020 kg / 9.300 kg (Extended)
- With full fuel tank, hydraulic system and all service fluids and 75 kg operator weight are included

BRAKES

- **Service brake:** Oil bath, hydraulically operated, self-adjusting disc brakes located within the rear axle, with separate brake pedals for the left and right wheels
- **Parking brake:** Hand lever-controlled mechanical brake, effective on the rear axle differential

FILLING CAPACITIES

Engine oil with filter	8 l
Engine cooling system	19 l
Fuel tank	140 l
Front axle differential	11,5 l
Front axle pins	2 x 1,3 l
Rear axle differential	16 l
Rear axle pins	2 x 1,5 l
Transmission	21 l
Hydraulic system (Total)	145 l

ELECTRICAL SYSTEM

Voltage	12 V
Battery	135 Amp
Alternator	85 A

TIRES

Front tires	16.9 - 28 (14 layers)
Rear tires	16.9 - 28 (14 layers)

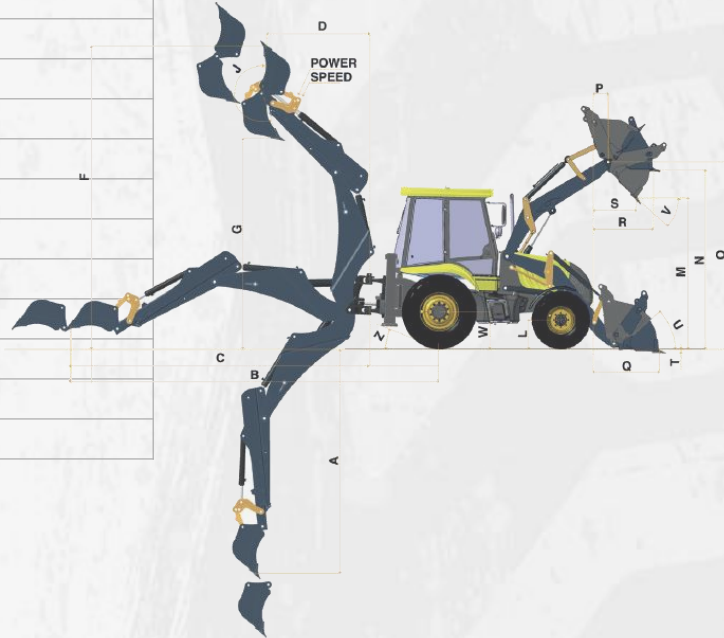
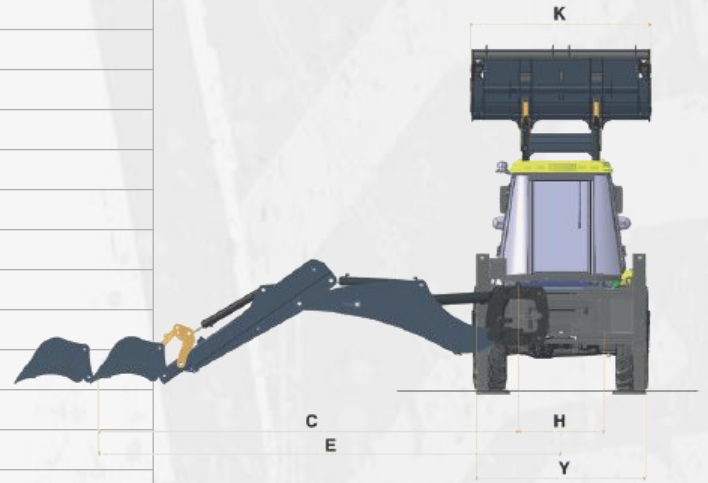
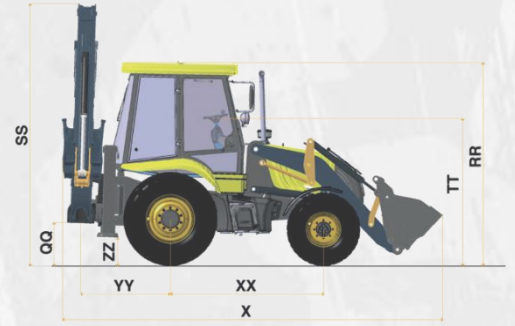
LOADER PERFORMANCE

Bucket capacity	1,1 m3
Bucket breakout force	7734 kgf
Arm breakout force	5905 kgf
Max. height lifting capacity	3100 kg

BACKHOE PERFORMANCE

Rear bucket capacity	0,17 m3
Bucket breakout force	6424 kgf
Arm breakout force	3461 kgf

DIMENSIONS			Fixed Dipper	TB (Extended)	TB (Retracted)
A	SAE Maximum dig depth	mm	4.020	5.310	4.215
A	Maximum dig depth	mm	4.520	5.810	4.715
B	Reach - ground level to rear wheel centre	mm	6.830	7.990	6.990
C	Reach - ground level to slew centre	mm	5.480	6.641	5.640
D	Reach - at full high to slew centre	mm	1.724	2.776	1.936
E	Side reach –to centre line of machine	mm	6.005	7.149	6.147
F	SAE operating height	mm	5.568	6.406	5.696
G	Max loadover height	mm	3.824	4.680	3.971
J	Bucket rotation	°		205	
K	Shovel Width	mm		2.400	
Y	Rear frame width	mm		2.250	
SS	Total travel clearance	mm		3.864	
QQ	Kingpost clearance	mm		591	
Z	Departure angle	°		21	
ZZ	Stabilizer feet clearance	mm		363	
YY	Slew centre to rear axle centre distance	mm		1.380	
XX	Axle centreline distance	mm		2.300	
X	Total travel length	mm		5.740	
TT	Steering wheel centre height	mm		2.148	
RR	Cab roof height	mm		3.000	
P	Pin forward reach	mm		413	
S	Reach at full height fully dumped	mm		935	
R	Max. reach at full height	mm		1.260	
V	Dump angle	°		43	
M	Dump height	mm		2.810	
N	Load over height	mm		3.338	
O	Loader hinge pin height	mm		3.491	
U	Roll back at ground	°		44	
T	Dig depth	mm		115	
Q	Reach at ground (toe plate horizontal)	mm		1.340	
H	Total kingpost travel	mm		1.125	
W	Rear wheel centre to ground	mm		643	
L	Front wheel centre to ground	mm		643	



MST CONSTRUCTION EQUIPMENT YATIRIM A.Ş.

4. Organize Sanayi Bölgesi 83426 Nolu Cad. No:1 27620 Gaziantep / TURKEY

P 00 90 342 211 59 00 F 0090 342 357 00 32

www.mst-tr.com

export@mst-tr.com

NOTICE: MST has the right to modify the specifications and design of the model indicated on that catalogue without prior notice.

