



## ENGINE

<b>Model</b>	PERKINS 1104C-44T
<b>Type</b>	Water cooled diesel engine with 4 cycles, 4 cylinders, water cooled, turbocharger and inter-cooler.
<b>Emission class</b>	Stage II (Tier 2)
<b>Cylinders</b>	4
<b>Displacement</b>	4.400 cc
<b>Max. Power</b>	74.5 kW / 99 HP (@2200 rpm)
<b>Max. Torque</b>	408 Nm (@1400 rpm)
	▪ Compatible with the Emission Regulations EU Stage II and U.S EPA Tier2

## TRANSMISSION

- Heavy-Duty Auto Powershift Transmission (TLB2 CD)
- 4 Forward and 4 Reverse Gears
- 40 km/h max. Speed
- Fully Hydraulic Steering
- 2 WD / 4WD Switch
- 40 km/h max. speed
- 2.64/1 Stall Ratio converter
- Transmission lubricant cooling

## AXLES

- Heavy-Duty Service Type CARRARO Axles
- 16° Front Axle Oscillation
- 2WD and 4 WD Function
- Outboard Planetary Reduction
- Differential Lock on Rear Axle

## HYDRAULIC SYSTEM

- **Main Pump**
- |                       |                  |
|-----------------------|------------------|
| <b>Type</b>           | Tandem Gear Type |
| <b>Max. flow rate</b> | 86 l/min         |
| <b>Pressure</b>       | 240 bar          |
- **Auxiliary Pump**
- |                       |           |
|-----------------------|-----------|
| <b>Type</b>           | Gear type |
| <b>Max. flow rate</b> | 59 l/min  |
| <b>Pressure</b>       | 207 bar   |
- Highly efficient tandem gear pump, open-center hydraulic system.

## WEIGHT

Standard machine operating weight 8.580 kg / 8.860 kg (Extended)

- With full fuel tank, hydraulic system and all service fluids and 75 kg operator weight are included

## BRAKES

- **Service brake:** Oil bath, hydraulically operated, self-adjusting disc brakes located within the rear axle, with separate brake pedals for the left and right wheels
- **Parking brake:** Hand lever-controlled mechanical brake, effective on the rear axle differential

## FILLING CAPACITIES

Engine oil with filter	8 l
Engine cooling system	19 l
Fuel tank	140 l
Front axle differential	7,5 l
Front axle pins	2 x 0,8 l
Rear axle differential	16 l
Rear axle pins	2 x 1,5 l
Transmission	21 l
Hydraulic system (Total)	145 l

## ELECTRICAL SYSTEM

Voltage	12 V
Battery	135 Amp
Alternator	85 A

## TIRES

Front tires	405/70 - 20 (14 layers)
Rear tires	16.9 - 28 (14 layers)

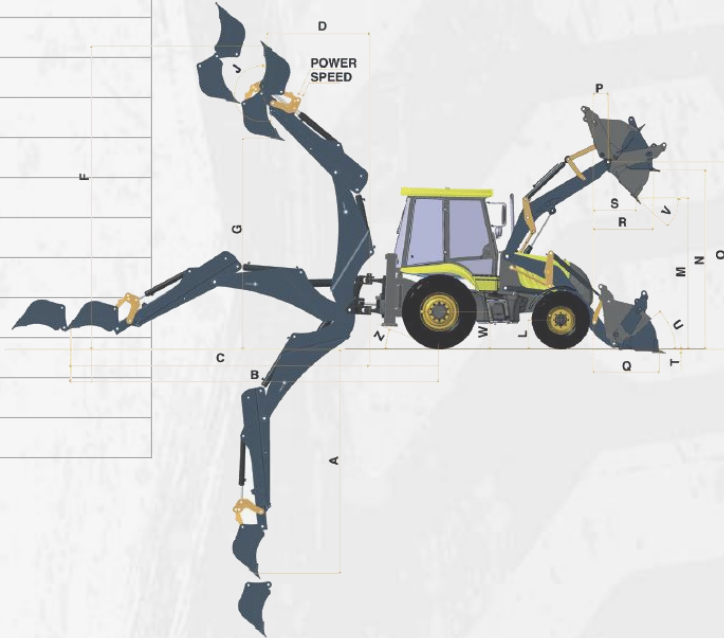
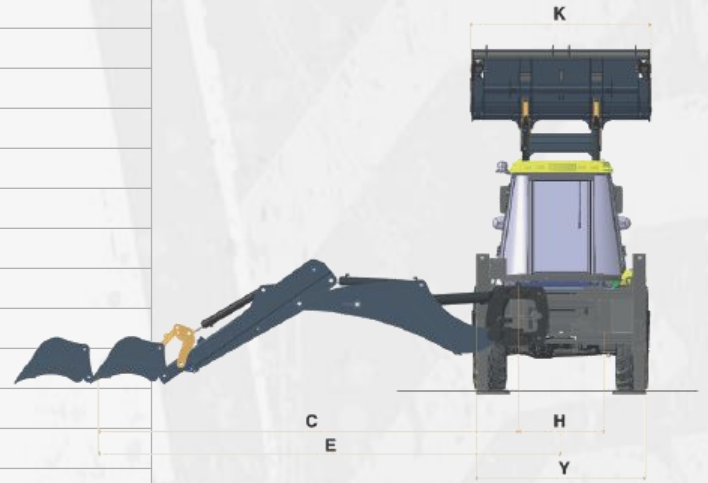
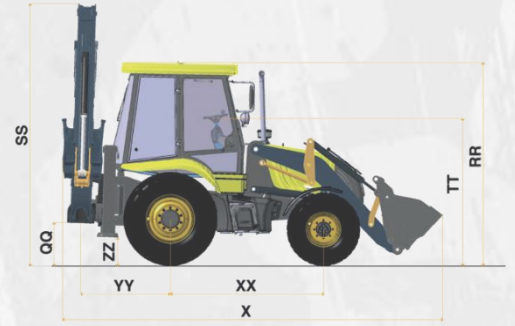
## LOADER PERFORMANCE

Bucket capacity	1,1 m3
Bucket breakout force	7734 kgf
Arm breakout force	5905 kgf
Max. height lifting capacity	3100 kg

## BACKHOE PERFORMANCE

Rear bucket capacity	0,17 m3
Bucket breakout force	6424 kgf
Arm breakout force	3461 kgf

DIMENSIONS		Fixed Dipper	TB (Extended)	TB (Retracted)	
A	SAE Maximum dig depth	mm	4.075	5.350	4.255
A	Maximum dig depth	mm	4.575	5.850	4.755
B	Reach - ground level to rear wheel centre	mm	6.866	8.027	7.026
C	Reach - ground level to slew centre	mm	5.480	6.641	5.640
D	Reach - at full high to slew centre	mm	1.727	2.776	1.936
E	Side reach –to centre line of machine	mm	6.005	7.149	6.147
F	SAE operating height	mm	5.509	6.347	5.653
G	Max loadover height	mm	3.764	4.623	3.912
J	Bucket rotation	°		205	
K	Shovel Width	mm		2.400	
Y	Rear frame width	mm		2.250	
SS	Total travel clearance	mm		3.838	
QQ	Kingpost clearance	mm		542	
Z	Departure angle	°		19	
ZZ	Stabilizer feet clearance	mm		338	
YY	Slew centre to rear axle centre distance	mm		1.388	
XX	Axle centreline distance	mm		2.237	
X	Total travel length	mm		5.740	
TT	Steering wheel centre height	mm		2.057	
RR	Cab roof height	mm		2.970	
P	Pin forward reach	mm		377	
S	Reach at full height fully dumped	mm		900	
R	Max. reach at full height	mm		1.124	
V	Dump angle	°		43	
M	Dump height	mm		2.800	
N	Load over height	mm		3.328	
O	Loader hinge pin height	mm		3.481	
U	Roll back at ground	°		44	
T	Dig depth	mm		124	
Q	Reach at ground (toe plate horizontal)	mm		1.317	
H	Total kingpost travel	mm		1.125	
W	Rear wheel centre to ground	mm		643	
L	Front wheel centre to ground	mm		496	



## MST CONSTRUCTION EQUIPMENT YATIRIM A.Ş.

4. Organize Sanayi Bölgesi 83426 Nolu Cad. No:1 27620 Gaziantep / TURKEY

P 00 90 342 211 59 00 F 00 90 342 357 00 32

www.mst-tr.com

export@mst-tr.com

**NOTICE:** MST has the right to modify the specifications and design of the model indicated on that catalogue without prior notice.

